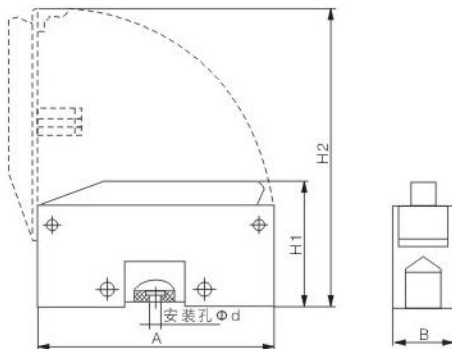


序号	产品型号	配装熔断体尺码	额定电压(V)	额定电流(A)	外形尺寸Outline dimension(mm)						重量 (g) Weight
					图号 Fig.	A	B	H1	H2	Φd	
D0102	RT14-32	14×51	500	32	8.6	105	26.5	57	135	5.5	148
D0103	RT14-63	22×58	500	63	8.6	125	35	66	158	5.5	241



用途 Applications

本系列熔断器支持件适用于交流50Hz、额定绝缘电压至500V、约定发热电流至125A，主要用在电气线路中作为尺码至22×58的各种使用类别(gG、aM、aR等)的熔断体的支持件。本系列熔断器支持件具有耐受约定发热电流及预期短路冲击电流至100KA动热稳定的能力。其中可带熔断指示灯，灯亮指示熔断体已熔断。

本系列熔断器支持件符合国家标准GB13539.1、GB13539.2和国际电工委标准IEC60269-1、IEC60269-2、IEC60269-2-1等规定。

These fuse holders are supporters for fuses with size up to 22×58mm. They are capable of working under heat caused by rated current and expected short impacting current up to 100KA. It can also function as a fuse disconnecting switch by multi-phase combination. There are two in/out lines at the RT18N fuse base, providing a power cut function. With an indicator, with an indicator which goes on when the fuse links breaks.

Rated insulate voltage up to 500V; Working frequency 50Hz AC; Conventional free air thermal current up to 125A; Compliant with GB13539.1, GB13539.2 and IEC60269-1, IEC60269-2, IEC60269-2-1.

结构特点 Design Features

本系列熔断器支持件由塑料压制的外壳装上触头和载熔件后，经铆接或焊接而成，均可组成多相结构。RT19为敞开式。其他型号都是半封闭式结构。RT18型支持件均为TH35mm的导轨式安装，RT14-20型支持件可选螺钉安装或导轨安装。

After the plastic-injected case is equipped with contacts and fuse links, the bases are formed by welding or riveting both capable of being multi-phase structured. RT19 are open-structure, and others are semi-concealed structure. RT18 bases are all DIN rail installed. RT14-20 fuse base supports for the screw installation and the installation guide.

基本数据 Basic Data

产品型号、额定绝缘电压、约定发热电流、配置圆筒帽形熔断体尺码、外形尺寸见图8.1~8.7及表8（n相组合的宽度 $B_n=nB$ ）。

The models, rated insulate voltage, rated current, and dimensions are shown in Figures 8.1~8.7 and Table 8 (Width of N-phase combination is $B_n=nB$).