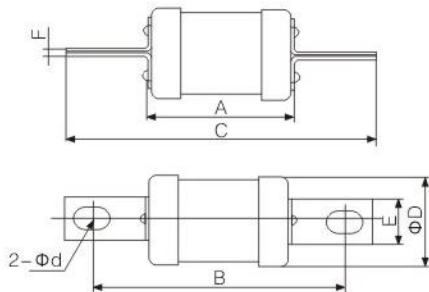


序号 No.	熔断体型号 Models				额定电压 (V) Rated voltage	额定电流 (A) Rated current	外形尺寸(mm)Outline dimension(mm)								重量 (g) Weight
	本公司 JINSHAN		国内外同类产品 Cross-reference				图号 Fig	A	B	C	ΦD	E	F	Φd	
	普通(gG)	快速(aR)	普通(gG)	快速(aR)											
D0223	RG8	RGS8	TC	-	415/550	125~160	13.5	63.5	110	135	38	20	3.0	8.5×15	212
D0224	RG8B	RGS8B	-	-	415/550	80~100	13.5	60	74	94	22	20	3.0	6×9	60.9
D0225	RG9	RGS9	RT15-200/B2	-	415/550	200	13.5	74	110	135	40	19	3	9.5×15	24.2
D0226	RG10	RGS10	RT15-350/B3	-	415/550	250~350	13.5	76	112	138	53	25	3	9×15	451
D0227	RG10B	RGS10B	TM	-	415/550	355~400	13.5	73.5	110	135	60	25	4	8.5×15	563



## 用途 Applications

本系列熔断体适用于交流50Hz, 额定电压至1200V、额定电流至630A的电气装置中, 有三种结构不同的熔体, 一种作为电气线路的过载和短路保护(gG); 另一种作为半导体器件及其成套装置的短路保护(aR); 还可派生为电动机短路保护(aM)。

本系列熔断体额定分断能力至80KA。

本系列熔断体符合国家标准GB13539和国际电工委标准IEC60269。

This series of fuse-links for the exchange of 50Hz, rated voltage to 1200V, rated current to 630A electrical devices, there are three Different kinds of structure melt, an electrical circuit as overload and short circuit protection(gG); the other as a set of semiconductor devices and their Short-circuit protection device(aR); can be derived for the electrical short-circuit protection(aM).

This series of fuse-links to the rated breaking capacity 80KA.

This series of fuse in line with the national standards body and international electricity Work Gb13539 standard IEC60269.

## 结构特点 Design Features

由纯铜片/银片(或丝)制成的变截面熔体封装于由高强度瓷或环氧玻璃布管制成的熔管内, 熔管中充满经化学处理过的高纯度石英砂作为灭弧介质。熔体二端采用点焊与端帽(或触刀连接板)牢固电连接。熔断体可带有撞击器, 当熔断体熔断时, 撞击器立即动作, 推动微动开关, 发出各种信号以及自动切换电路。

By the pure copper film/silver film(or wire)into the variable cross-section of high melt strength by package porcelain or epoxy glass cloth control tube into the melt, the melting Tube filled with chemically treated high-purity quartz sand as arc-quenching medium. Second, the use of melt-side spot with the end caps(or touch Connection board knife)Solid electrical connections. Can fuse with the impactor body, when the fuse body, the impactor immediate action to promote the micro-switch, the issue of a variety of signal and automatic switching circuit.

## 基本数据 Basic Data

熔断体型号、外型尺寸、额定电压、额定电流见图 13.1~13.7。

The models, dimensions, ratings are shown in Figures 13.1~13.7.